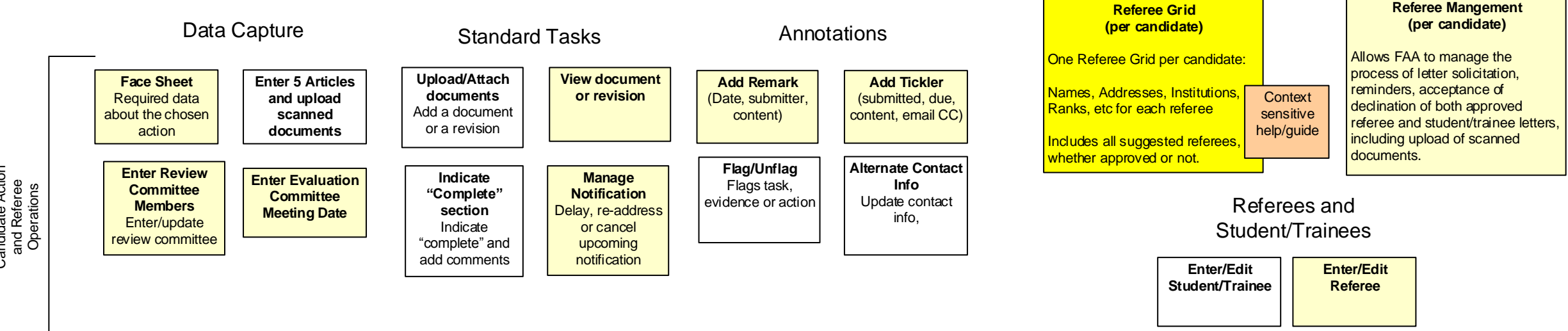
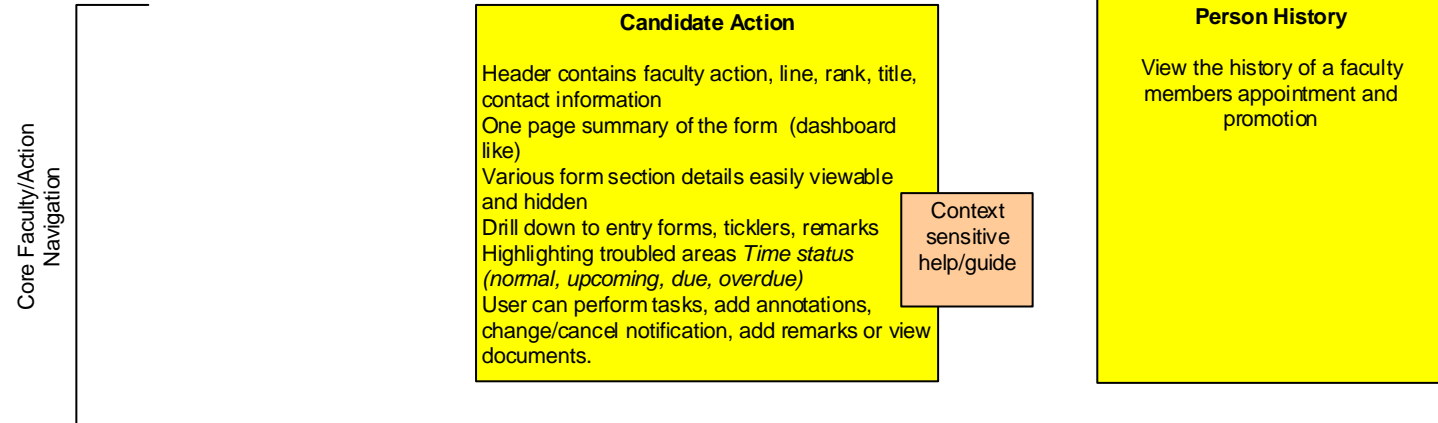
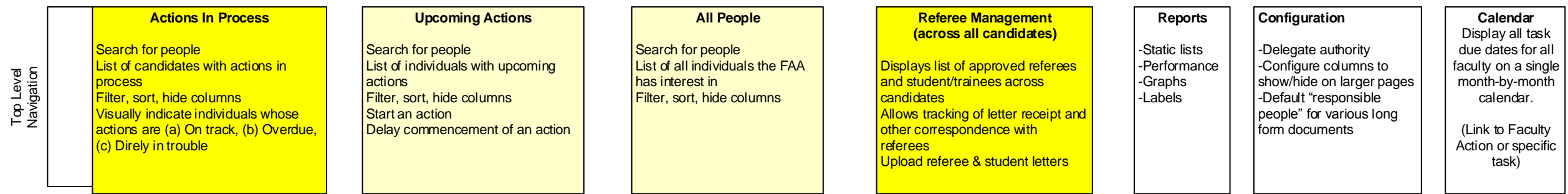


FASTFAC Faculty Affairs Administrator Schematic Map

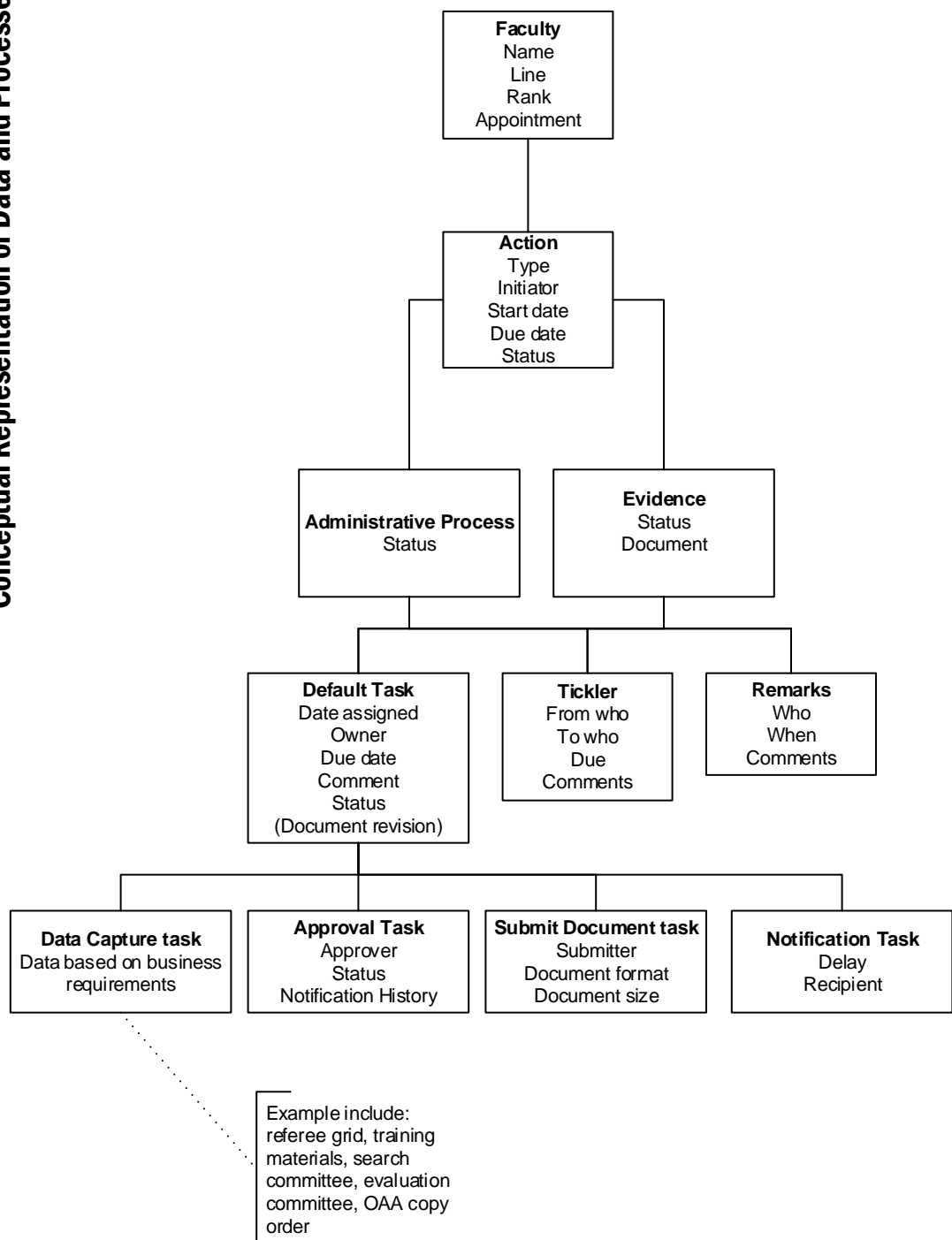


Proposed Factor deliverable

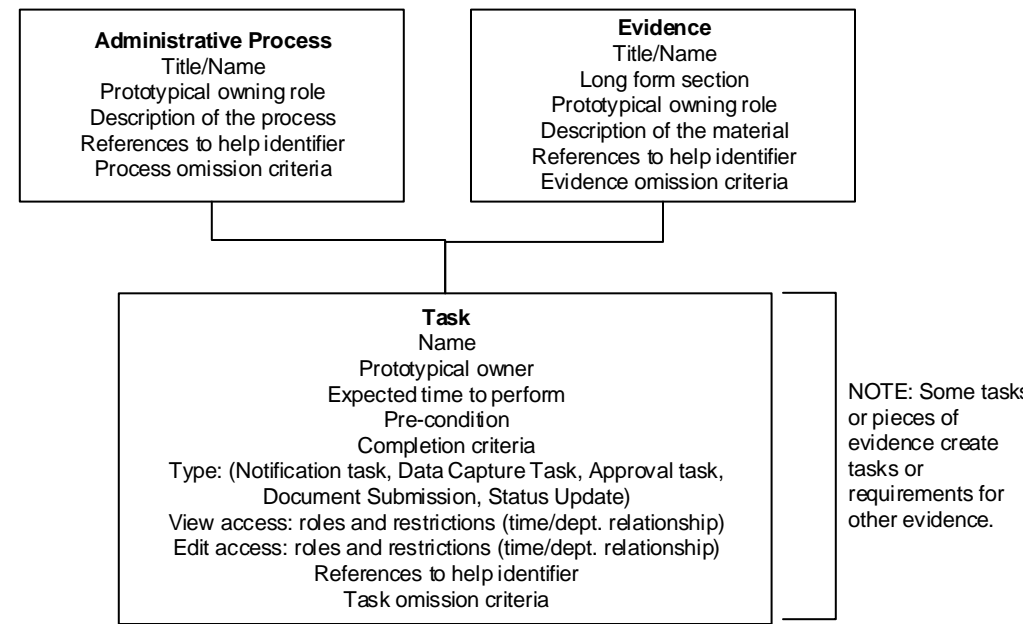
Illustrated in FAA schematic mockup

Conceptual Representation of Data and Processes

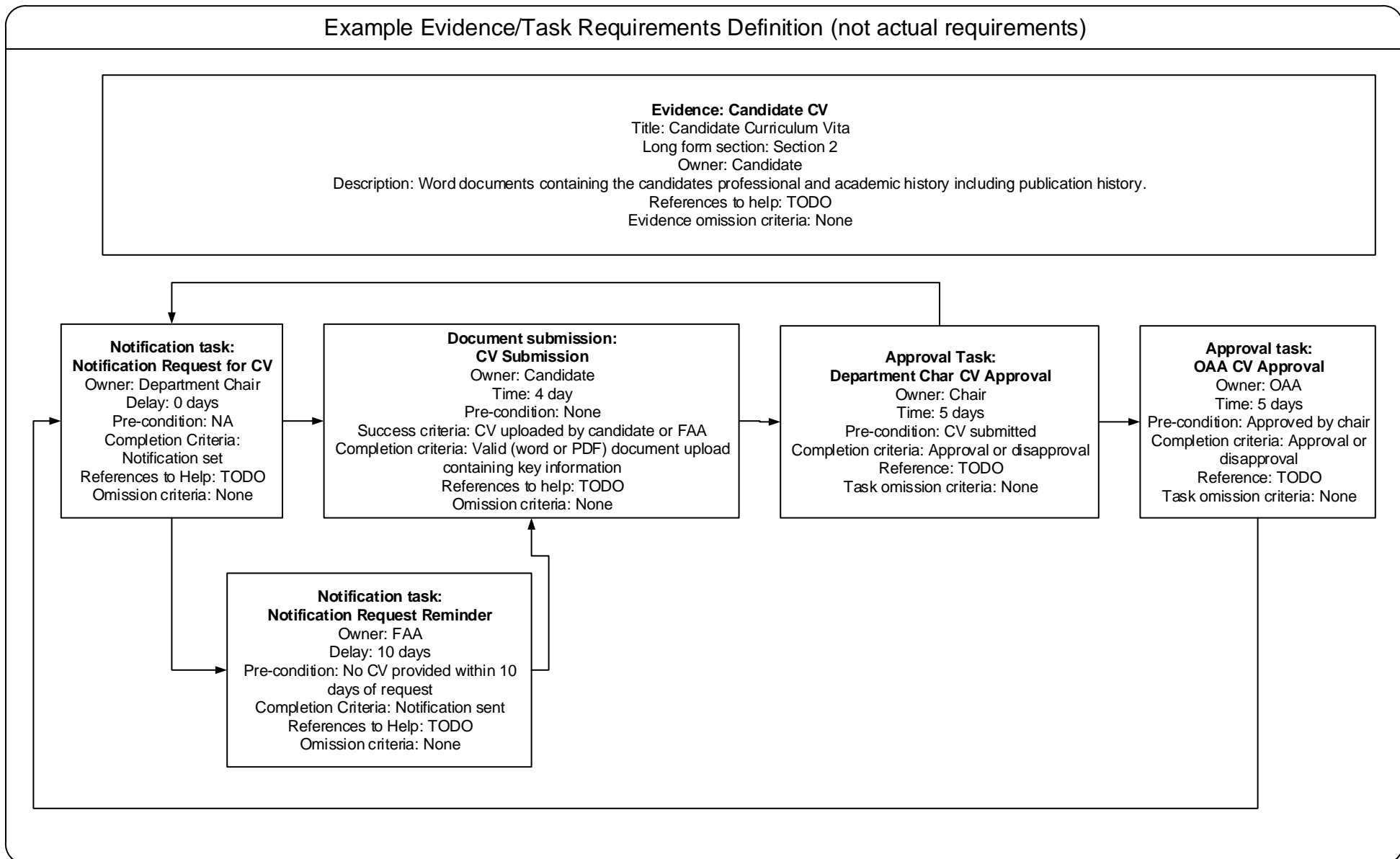
Organization of Data Captured for the Long Form



Structure for Requirements Definition of Evidence Capture



Example Evidence/Task Requirements Definition (not actual requirements)



FASTFAC User Site Overviews (Preliminary)

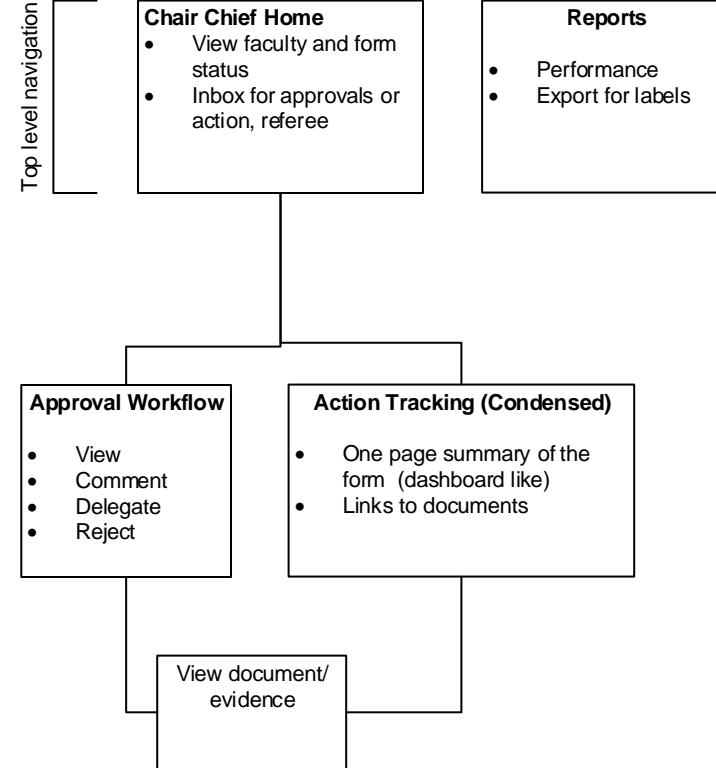
Site Maps organized by user roles. Users may have multiple roles and therefore may have user landing pages that incorporated multiple home pages (in a few chases).

Referee Site

Referees Landing Page (requested via email)

- Confirm willingness to serve
- Submit upload / letter

Chairs and Chief's Site

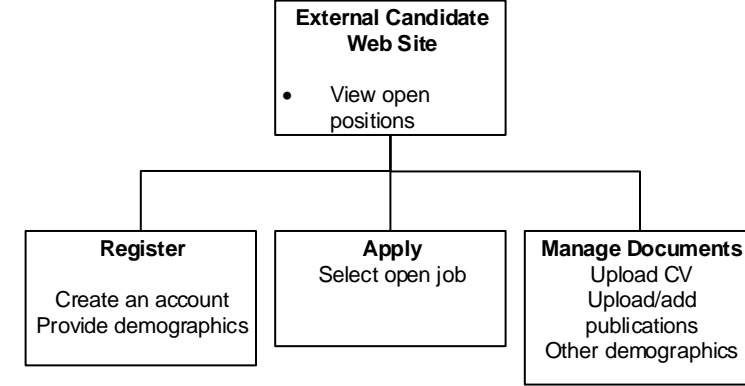


Internal Candidate Site

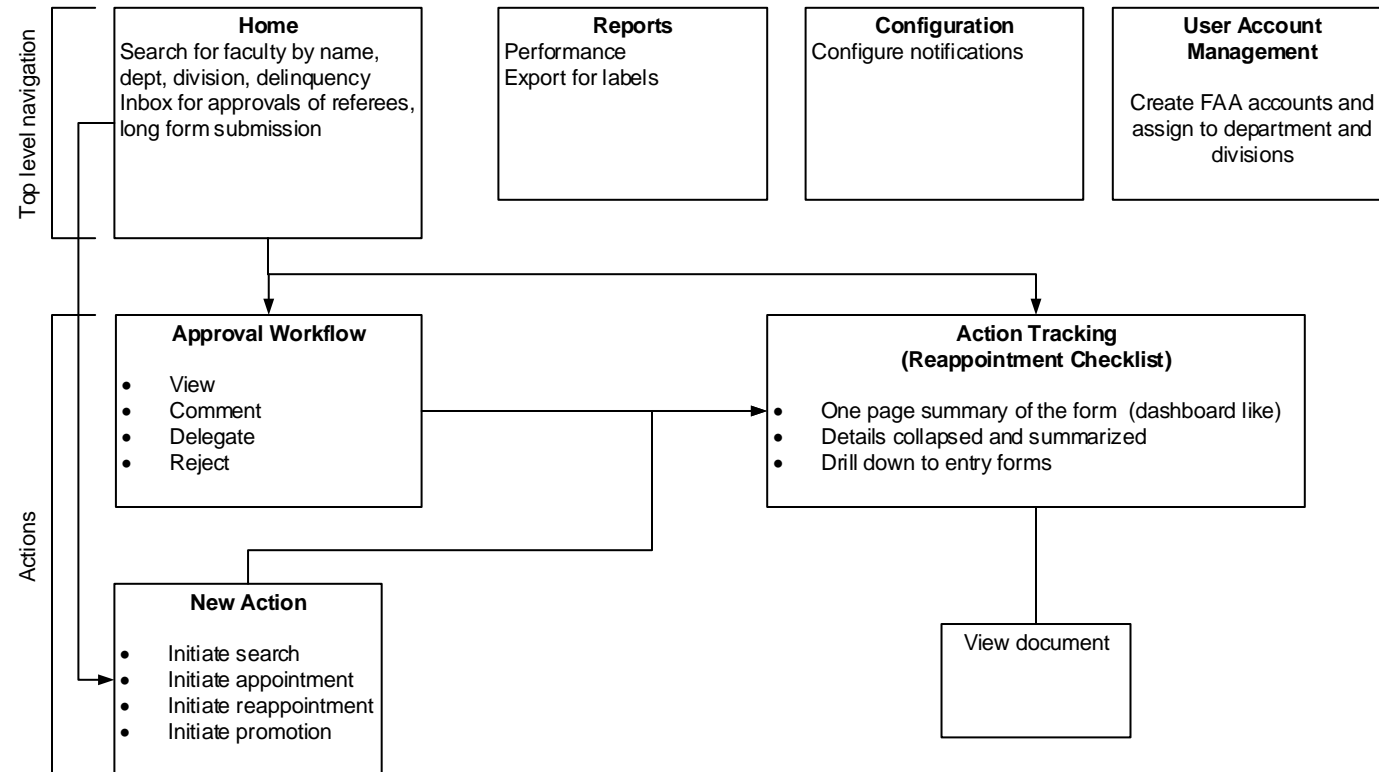
Internal Candidate

- Update CV
- Apply for position
- Update publication list
- Submit publications

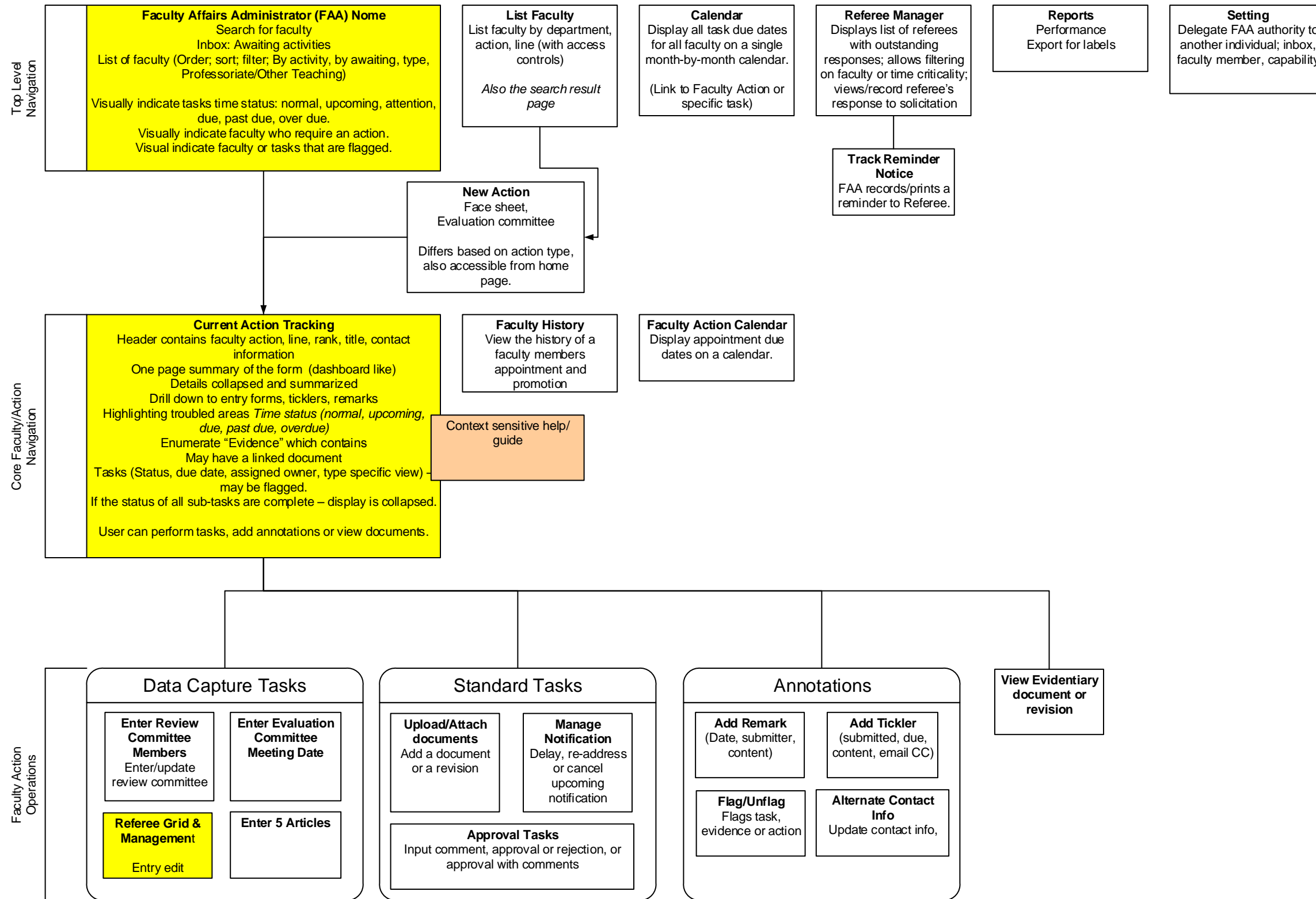
External Candidate Site



Preliminary Office of Academic Affairs Site



FASTFAC Faculty Affairs Administrator Site Map



Office of Academic Affairs (OAA) Schematic Map

